

CERTIFICATE OF ANALYSIS

ISO/IEC 17025:2017 ACCREDITATION #103104



Order #: 96817
Order Name: Social CBD
 Drops 1000mg - Lemon Ginger
 30mL
Batch#: LE220045
Received: 07/06/2022
Completed: 07/14/2022

Kadenwood Brands
<https://selectmylevel.com>
info@selectmylevel.com



Sample



Cannabinoid Summary

N/D D9-THC	3.657% Total CBD
1,033.4 mg Cannabinoids per unit	1,033.4 mg CBD per unit

Batch Info

ID:
Date:
Best By Date:
Size:
Total Qty Produced:

Report Download Info

URL: <https://www.verifycbd.com/report/83d2z17a31>

1 unit = 30 ml per unit x density
 (0.942) x Cannabinoid
 concentration

Testing Summary

Tested Cannabinoids	Pass Pesticide	Tested Terpenes
Tested Microbial	Pass Residual Solvents	Pass Mycotoxin
Pass Heavy Metals	Tested Water Activity	Pass Filt and Foreign

D9-THC
THCA
CBD 3.657%
CBDA
CBDV
CBC
CBN
CBG
CBGA
D8-THC
THCV

Instruments

GCMS-MS - Shimadzu GCMS-TQ8040
 LCMS-MS - Shimadzu LCMS-8060
 Headspace GCMS - Shimadzu GCMS
 QP2020 with HS20
 SHIMADZU INTEGRATED UPLC-PDA
 ICP-MS - Shimadzu ICPMS-2030
 LC-MS - Shimadzu LCMS-8060
 PCR - Agilent AriaMX
 HD-3A Water Activity Meter
 Amscope Simul-Focal Trinocular Stereo
 Zoom Microscope

SOPS

Cannabinoids Test - GSL SOP 400
 Terpenes Test - GSL SOP 404
 Pesticide Analysis - GSL SOP 401
 Residual Solvents - GSL SOP 405
 Heavy Metals Analysis- GSL SOP 403
 Mycotoxin Analysis - GSL SOP 401
 Microbial Analysis - GSL SOP 406
 Water Activity - GSL SOP 407
 Filt and Foreign Materials Analysis -
 GSL SOP 409

Diana Asensio, M.S.,
 Lab Director

Green Scientific Labs
info@greenscientificlabs.com
 1-833 TEST-CBD



This COA is governed by the terms and conditions listed on: <https://www.greenscientificlabs.com/terms-of-use.php>

CERTIFICATE OF ANALYSIS

ISO/IEC 17025:2017 ACCREDITATION #103104



Order #: 96817
 Order Name: Social CBD
 Drops 1000mg - Lemon Ginger
 30mL
 Batch#: LE220045
 Received: 07/06/2022
 Completed: 07/14/2022

Kadenwood Brands
<https://selectmylevel.com>
info@selectmylevel.com



Sample



Cannabinoids Test

HPLC-DAD
 GSL SOP 400

UPLOADED: 07/14/2022 14:52:20

Cannabinoids	LOQ(mg/g)	LOD(mg/g)	weight(%)	mg/g	mg/unit
D9-THC	0.1954	0.0645	N/D	N/D	N/D
THCA	0.1954	0.0645	N/D	N/D	N/D
CBD	0.1954	0.0645	3.657%	36.569	1,033.440
CBDA	0.1954	0.0645	N/D	N/D	N/D
CBDV	0.1954	0.0645	B/LOQ	B/LOQ	B/LOQ
CBC	0.1954	0.0645	N/D	N/D	N/D
CBN	0.1954	0.0645	N/D	N/D	N/D
CBG	0.1954	0.0645	N/D	N/D	N/D
CBGA	0.1954	0.0645	N/D	N/D	N/D
D8-THC	0.1954	0.0645	N/D	N/D	N/D
THCV	0.1954	0.0645	N/D	N/D	N/D

N/D
Total D9-THC

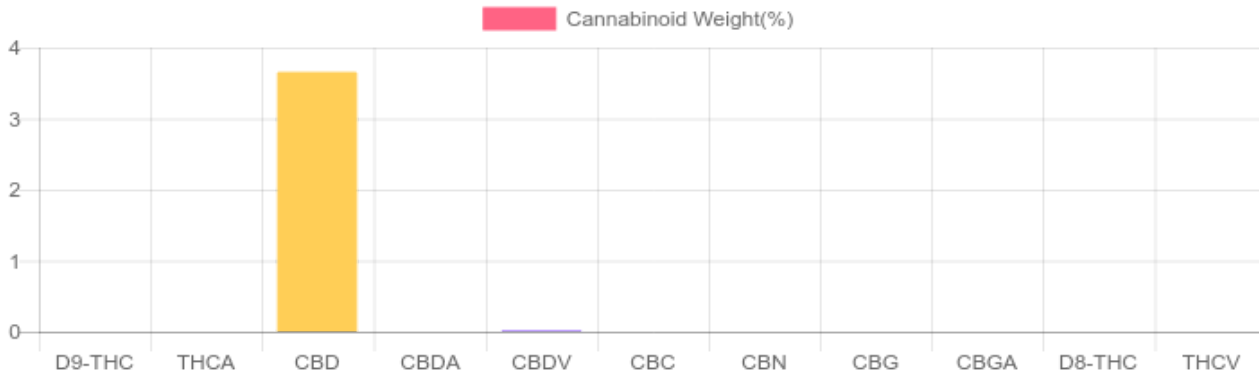
3.657%
Total CBD

1,033.4 mg
Cannabinoids per unit

1,033.4 mg
CBD per unit

TOTAL D9-THC N/D
 TOTAL CBD* **3.657%** **36.569** **1,033.4**
 TOTAL CANNABINOIDS **3.657%** **36.569** **1,033.4**

1 unit = 30 ml per unit x density (0.942) x Cannabinoid concentration



*Total CBD = CBD + CBDA x 0.877
 N/D - Not Detected, B/LOQ - Below Limit of Quantification

Diana Asensio, M.S.,
 Lab Director

Green Scientific Labs
info@greenscientificlabs.com
 1-833 TEST CBD



This COA is governed by the terms and conditions listed on: <https://www.greenscientificlabs.com/terms-of-use.php>

CERTIFICATE OF ANALYSIS

ISO/IEC 17025:2017 ACCREDITATION #103104



Order #: 96817
 Order Name: Social CBD
 Drops 1000mg - Lemon Ginger
 30mL
 Batch#: LE220045
 Received: 07/06/2022
 Completed: 07/14/2022

Kadenwood Brands
<https://selectmylevel.com>
info@selectmylevel.com



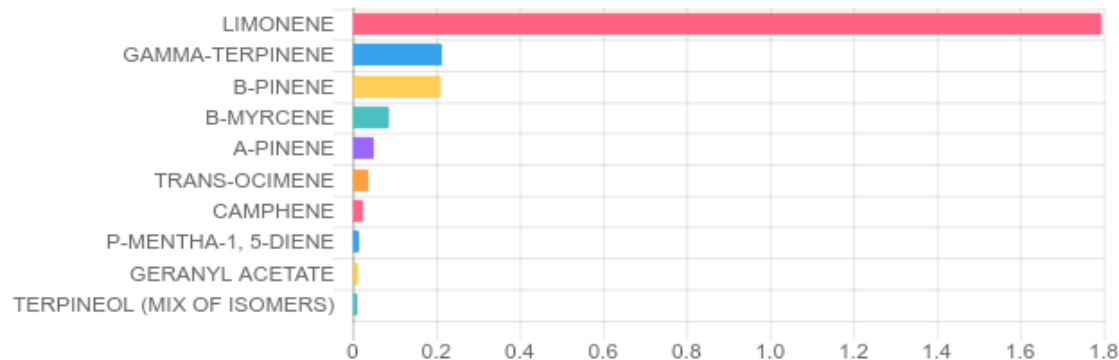
TERPENES: TOTAL (2.504%)

GSL SOP 404
 Uploaded: 07/08/2022 12:44:35

GC-FID

Terpene	Results (%)	LOQ (%)	LOD (%)	Terpene	Results (%)	LOQ (%)	LOD (%)
3-CARENE	N/D	0.003%	0.001%	GERANIOL	0.009%	0.003%	0.001%
A-BISABOLOL	N/D	0.003%	0.001%	GERANYL ACETATE	0.013%	0.003%	0.001%
A-CEDRENE	N/D	0.003%	0.001%	GUAJOL	N/D	0.003%	0.001%
A-HUMULENE	N/D	0.003%	0.001%	HEXAHYDROTHYMOL	N/D	0.003%	0.001%
A-PINENE	0.051%	0.003%	0.001%	ISOBORNEOL	N/D	0.003%	0.001%
A-TERPINENE	0.003%	0.003%	0.001%	ISOPULEGOL	N/D	0.003%	0.001%
B-MYRCENE	0.087%	0.003%	0.001%	LIMONENE	1.795%	0.003%	0.001%
B-PINENE	0.211%	0.003%	0.001%	LINALOOL	0.005%	0.003%	0.001%
BORNEOL (MIX OF ISOMERS)	0.003%	0.003%	0.001%	NEROL	B/LOQ	0.003%	0.001%
CAMPHENE	0.025%	0.003%	0.001%	P-MENTHA-1, 5-DIENE	0.015%	0.003%	0.001%
CAMPHOR (MIX OF ISOMERS)	B/LOQ	0.003%	0.001%	PULEGONE (+)	N/D	0.003%	0.001%
CARYOPHYLLENE OXIDE	N/D	0.003%	0.001%	SABINENE HYDRATE	N/D	0.003%	0.001%
CEDROL	N/D	0.003%	0.001%	TERPINEOL (MIX OF ISOMERS)	0.011%	0.003%	0.001%
CIS-NEROLIDOL	N/D	0.003%	0.001%	TERPINOLENE	0.009%	0.003%	0.001%
CIS-OCIMENE	0.003%	0.003%	0.001%	TRANS-CARYOPHYLLENE	0.005%	0.003%	0.001%
ENDO-FENCHYL ALCOHOL	N/D	0.003%	0.001%	TRANS-NEROLIDOL	N/D	0.003%	0.001%
EUCALYPTOL	0.007%	0.003%	0.001%	TRANS-OCIMENE	0.038%	0.003%	0.001%
FENCHONE (MIX OF ISOMERS)	N/D	0.003%	0.001%	VALENCENE	N/D	0.003%	0.001%
GAMMA-TERPINENE	0.214%	0.003%	0.001%				

Top Terpenes Results:



Diana Asensio, M.S.,
 Lab Director

Green Scientific Labs
info@greenscientificlabs.com
 1-833 TEST CBD



This COA is governed by the terms and conditions listed on: <https://www.greenscientificlabs.com/terms-of-use.php>

CERTIFICATE OF ANALYSIS

ISO/IEC 17025:2017 ACCREDITATION #103104



Order #: 96817
 Order Name: Social CBD
 Drops 1000mg - Lemon Ginger
 30mL
 Batch#: LE220045
 Received: 07/06/2022
 Completed: 07/14/2022

Kadenwood Brands
<https://selectmylevel.com>
info@selectmylevel.com



PESTICIDE ANALYSIS:

GSL SOP 401

UPLOADED: 07/07/2022 15:50:37

GC-MS/MS

Pesticide	Action Level (ppm)	Results (ppm)	LOQ (ppm)	LOD (ppm)
CAPTAN	0.700	N/D	0.100	0.010
CHLORDANE	0.100	N/D	0.100	0.010
CHLORFENAPYR	0.100	N/D	0.100	0.010
COUMAPHOS	0.100	N/D	0.100	0.010

Pesticide	Action Level (ppm)	Results (ppm)	LOQ (ppm)	LOD (ppm)
CYFLUTHRIN	2.000	N/D	0.100	0.010
CYPERMETHRIN	1.000	N/D	0.100	0.010
PARATHION-METHYL	0.100	N/D	0.100	0.010
PENTACHLORONITROBENZENE	0.100	N/D	0.100	0.010

LC-MS/MS

Pesticide	Action Level (ppm)	Results (ppm)	LOQ (ppm)	LOD (ppm)
ABAMECTIN B1A	0.100	N/D	0.035	0.002
ACEPHATE	0.100	N/D	0.040	0.002
ACEQUINOCYL	0.100	N/D	0.002	0.002
ACETAMIPRID	0.100	N/D	0.002	0.002
ALDICARB	0.100	N/D	0.010	0.002
AZOXYSTROBIN	0.100	N/D	0.040	0.002
BIFENAZATE	0.100	N/D	0.002	0.002
BIFENTHRIN	3.000	N/D	0.002	0.002
BOSCALID	0.100	N/D	0.050	0.010
CARBARYL	0.500	N/D	0.004	0.002
CARBOFURAN	0.100	N/D	0.010	0.002
CHLORANTRANILIPROLE	10.000	N/D	0.010	0.002
CHLORPYRIFOS	0.100	B/LOQ	0.010	0.002
CLOFENTEZINE	0.100	N/D	0.002	0.002
DAMINOZIDE	0.100	N/D	0.040	0.010
DIAZINON	0.100	N/D	0.010	0.002
DICHLORVOS	0.100	N/D	0.040	0.002
DIMETHOATE	0.100	N/D	0.002	0.002
DIMETHOMORPH	2.000	N/D	0.002	0.001
ETHOPROPHOS	0.100	N/D	0.010	0.002
ETOFENPROX	0.100	N/D	0.002	0.002
ETOXAZOLE	0.100	N/D	0.002	0.002
FENHEXAMID	0.100	N/D	0.040	0.010
FENOXYCARB	0.100	N/D	0.004	0.002
FENPYROXIMATE	0.100	N/D	0.002	0.002
FIPRONIL	0.100	N/D	0.004	0.002
FLONICAMID	0.100	N/D	0.010	0.002
FLUDIOXONIL	0.100	N/D	0.004	0.002
HEXYTHIAZOX	0.100	N/D	0.004	0.002

Pesticide	Action Level (ppm)	Results (ppm)	LOQ (ppm)	LOD (ppm)
IMAZALIL	0.100	N/D	0.010	0.002
IMIDACLOPRID	5.000	N/D	0.002	0.002
KRESOXIM-METHYL	0.100	N/D	0.002	0.002
MALATHION	0.500	N/D	0.040	0.010
METALAXYL	2.000	N/D	0.004	0.002
METHIOCARB	0.100	N/D	0.010	0.002
METHOMYL	1.000	N/D	0.002	0.002
MEVINPHOS	0.100	N/D	0.036	0.009
MYCLOBUTANIL	0.100	N/D	0.040	0.002
NALED	0.100	N/D	0.010	0.002
OXAMYL	0.500	N/D	0.002	0.002
PACLOBUTRAZOL	0.100	N/D	0.004	0.002
PERMETHRINS	0.500	N/D	0.010	0.002
PHOSMET	0.100	N/D	0.002	0.002
PIPERONYL	3.000	N/D	0.002	0.002
BUTOXIDE	0.100	N/D	0.010	0.002
PRALLETHRIN	0.100	N/D	0.040	0.002
PROPICONAZOLE	0.100	B/LOQ	0.040	0.002
PROPOXUR	0.100	N/D	0.010	0.002
PYRETHRINS	0.500	N/D	0.013	0.001
PYRIDABEN	0.100	N/D	0.002	0.002
SPINETORAM	0.100	N/D	0.003	0.001
SPINOSAD	0.100	N/D	0.001	0.001
SPIROMESIFEN	0.100	N/D	0.002	0.002
SPIROTETRAMAT	0.100	N/D	0.010	0.002
SPIROXAMINE	0.100	N/D	0.040	0.002
TEBUCONAZOLE	0.100	N/D	0.040	0.010
THIACLOPRID	0.100	N/D	0.002	0.002
THIAMETHOXAM	5.000	N/D	0.010	0.002
TRIFLOXYSTROBIN	0.100	N/D	0.002	0.002

N/D = Not Detected, A/LOQ = Above LOQ Level, B/LOQ = Below LOQ Level, B/LOD = Below LOD Level

Diana Asensio, M.S.,
 Lab Director

Green Scientific Labs
info@greenscientificlabs.com
 1-833 TEST CBD



This COA is governed by the terms and conditions listed on: <https://www.greenscientificlabs.com/terms-of-use.php>

CERTIFICATE OF ANALYSIS

ISO/IEC 17025:2017 ACCREDITATION #103104



Order #: 96817
Order Name: Social CBD
 Drops 1000mg - Lemon Ginger
 30mL
Batch#: LE220045
Received: 07/06/2022
Completed: 07/14/2022

Kadenwood Brands
<https://selectmylevel.com>
info@selectmylevel.com



RESIDUAL SOLVENTS:

HS-GC-MS

GSL SOP 405

Uploaded: 07/07/2022 14:10:56

Residual Solvent	Action Level (ppm)	Results (ppm)	LOQ (ppm)	LOD (ppm)
1,1-DICHLOROETHENE	8	N/D	0.63	0.6
1,2- DICHLOROETHANE	2	N/D	0.12	0.04
1,2-DICHLOROETHENE	5	N/D	0.73	0.09
ACETONE	5,000	N/D	140	75
ACETONITRILE	410	N/D	25	6
BENZENE	1	N/D	1	0.6
BUTANE	5,000	N/D	50	48
CHLOROFORM	1	N/D	1	0.5
ETHANOL	5,000	B/LOQ	140	47
ETHYL ACETATE	5,000	N/D	140	40
ETHYL ETHER	5,000	N/D	140	50
ETHYLENE OXIDE	1	N/D	2	0.6
ISOPROPYL ALCOHOL	5,000	N/D	140	50
METHANOL	3,000	N/D	100	25
METHYLENE CHLORIDE	125	N/D	1.5	1.5
N-HEPTANE	5,000	N/D	140	6
N-HEXANE	290	N/D	18	6
PENTANE	5,000	N/D	140	75
PROPANE	5,000	N/D	30	30
TOLUENE	890	N/D	53	15
TRICHLOROETHENE	1	N/D	1	0.3
XYLENES	150	N/D	130	15

Diana Asensio, M.S.,
Lab Director

Green Scientific Labs
info@greenscientificlabs.com
 1-833 TEST CBD



This COA is governed by the terms and conditions listed on: <https://www.greenscientificlabs.com/terms-of-use.php>

CERTIFICATE OF ANALYSIS

ISO/IEC 17025:2017 ACCREDITATION #103104



Order #: 96817
 Order Name: Social CBD
 Drops 1000mg - Lemon Ginger
 30mL
 Batch#: LE220045
 Received: 07/06/2022
 Completed: 07/14/2022

Kadenwood Brands
<https://selectmylevel.com>
info@selectmylevel.com



Microbial Analysis:

Microbial Analysis GSL SOP 406

Uploaded: 07/08/2022 16:25:35

MICROBIAL ANALYSIS:

Test	SOP	Test Method	Device Used	Allowable Criteria	Actual Result
TOTAL YEAST AND MOLD	406	REAL-TIME PCR	ARIAMX PCR	NOT APPLICABLE	< 1,000 CFU/G
AEROBIC BACTERIA COUNT	406	REAL-TIME PCR	ARIAMX PCR	NOT APPLICABLE	< 10,000 CFU/G
ENTEROBACTERIACEAE	406	REAL-TIME PCR	ARIAMX PCR	NOT APPLICABLE	< 100 CFU/G
COLIFORM	406	REAL-TIME PCR	ARIAMX PCR	NOT APPLICABLE	< 100 CFU/G
ASPERGILLUS FUMIGATUS***	406	REAL-TIME PCR	ARIAMX PCR	< 1 CFU/G	NOT DETECTED
ASPERGILLUS NIGER***	406	REAL-TIME PCR	ARIAMX PCR	< 1 CFU/G	NOT DETECTED
ASPERGILLUS FLAVUS***	406	REAL-TIME PCR	ARIAMX PCR	< 1 CFU/G	NOT DETECTED
ASPERGILLUS TERREUS***	406	REAL-TIME PCR	ARIAMX PCR	< 1 CFU/G	NOT DETECTED
STEC E. COLI*	406	REAL-TIME PCR	ARIAMX PCR	< 1 CFU/G	NOT DETECTED
SALMONELLA*	406	REAL-TIME PCR	ARIAMX PCR	< 1 CFU/G	NOT DETECTED

* STEC and Salmonella run as Multiplex

** CFU/g Calculation based on MIP/Extract matrix

*** Flavis = 2 Copies of DNA / Fumigatis = 2 Copies of DNA Niger = 20 Copies of DNA / Terrus = 10 copies of DNA

Diana Asensio, M.S.,
 Lab Director

Green Scientific Labs
info@greenscientificlabs.com
 1-833 TEST CBD



This COA is governed by the terms and conditions listed on: <https://www.greenscientificlabs.com/terms-of-use.php>

CERTIFICATE OF ANALYSIS

ISO/IEC 17025:2017 ACCREDITATION #103104



Order #: 96817
Order Name: Social CBD
Drops 1000mg - Lemon Ginger
30mL
Batch#: LE220045
Received: 07/06/2022
Completed: 07/14/2022

Kadenwood Brands
<https://selectmylevel.com>
info@selectmylevel.com



Mycotoxin Analysis:

LC-MS/MS
GSL SOP 401

Uploaded: 07/07/2022 15:50:31

Analyte	LOQ (ppb)	LOD (ppb)	Action Lvl (ppb)	Results (ppb)
AFLATOXIN B1	1	1	20	N/D
AFLATOXIN B2	1	1	20	N/D
AFLATOXIN G1	1	1	20	N/D
AFLATOXIN G2	1	1	20	N/D
OCHRATOXIN A	1	1	20	N/D

Heavy Metals Analysis:

ICP-MS
GSL SOP 403

Uploaded: 07/07/2022 15:35:33

Metal	LOQ (ppb)	LOD (ppb)	Action Level (ppb)	Result (ppb)
ARSENIC (AS)	75	20	200	N/D
CADMIUM (CD)	75	20	200	N/D
MERCURY (HG)	75	20	100	N/D
LEAD (PB)	75	20	500	N/D

Moisture Analysis:

Shimadzu MOC63U Moisture Balance - GSL SOP 411

Uploaded: 07/06/2022 22:28:13

Moisture %

3.3%

Water Activity:

Water Activity Meter

Uploaded: 07/06/2022 22:28:14

Water

0.52

Filth and Foreign Materials Analysis:

Microscope - Amscope Simul-Focal Trinocular Stereo Zoom Microscope - GSL SOP 409

Uploaded: 07/06/2022 22:48:24

Pass: No Foreign Materials Detected

Diana Asensio, M.S.,
Lab Director

Green Scientific Labs
info@greenscientificlabs.com
1-833 TEST CBD



This COA is governed by the terms and conditions listed on: <https://www.greenscientificlabs.com/terms-of-use.php>